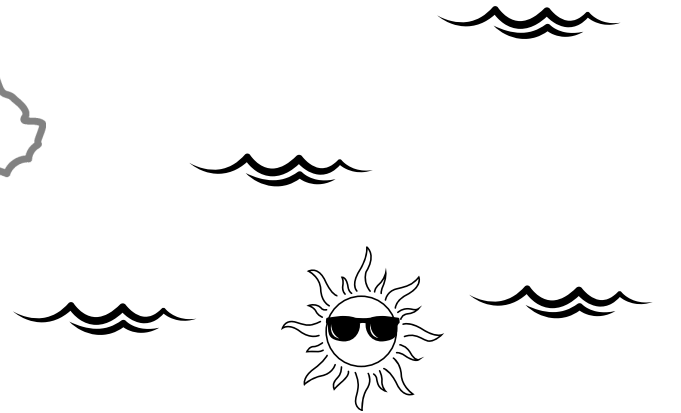


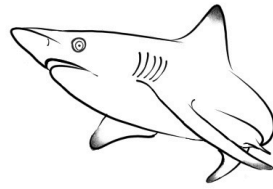
# Migration Mayhem!

Every winter, blacktip sharks travel to south Florida. The FAU Elasmolab studies sharks and rays. They catch, tag, and track blacktip shark movements. These efforts help scientists monitor shark movement to understand where they go and to help conservation efforts be the most effective.

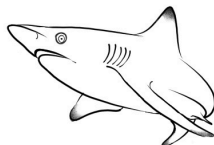
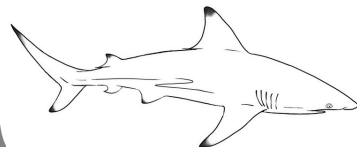
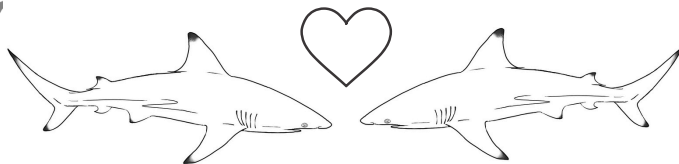
**Marine Science Laboratory**  
Charles E. Schmidt College of Science  
Florida Atlantic University



In the summer, blacktip sharks swim north, sometimes as far north as Long Island, New York.



South Carolina, North Carolina, and Georgia are the blacktips' mating areas.



❄️ During the winter, blacktip sharks swim to south Florida for food and warmer water. ❄️

Visit us at: <https://biology.fau.edu/marine-lab/>